

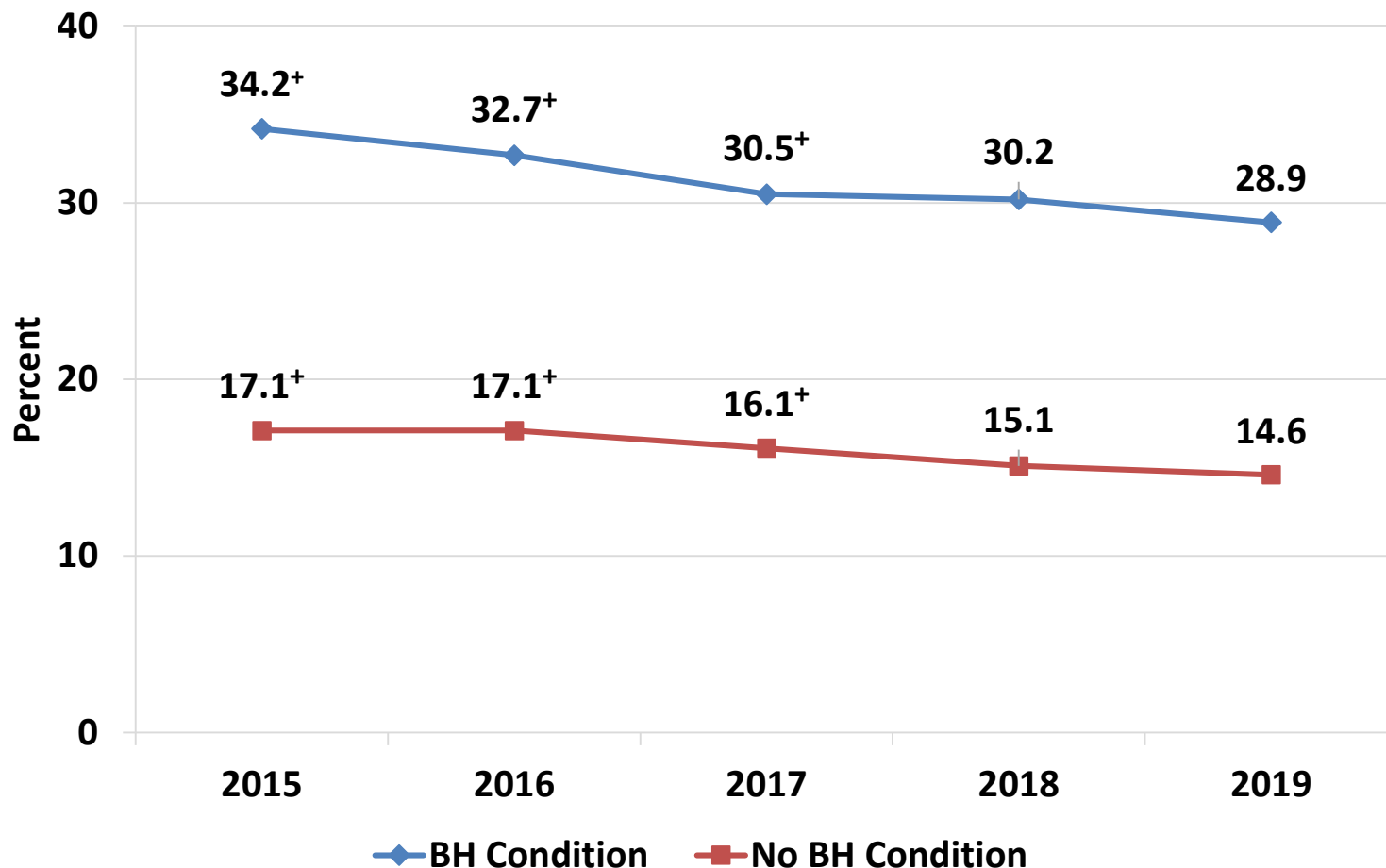
Smoking and Behavioral Health: 2019 NSDUH Trend Data Update

Doug Tipperman
Tobacco Policy Liaison
Substance Abuse and Mental Health Services Administration
U.S. Department of Health and Human Services



SAMHSA
Substance Abuse and Mental Health
Services Administration

Current Smoking among Adults (Age ≥ 18) with a Past Year Behavioral Health (BH) Condition: NSDUH, 2015-2019

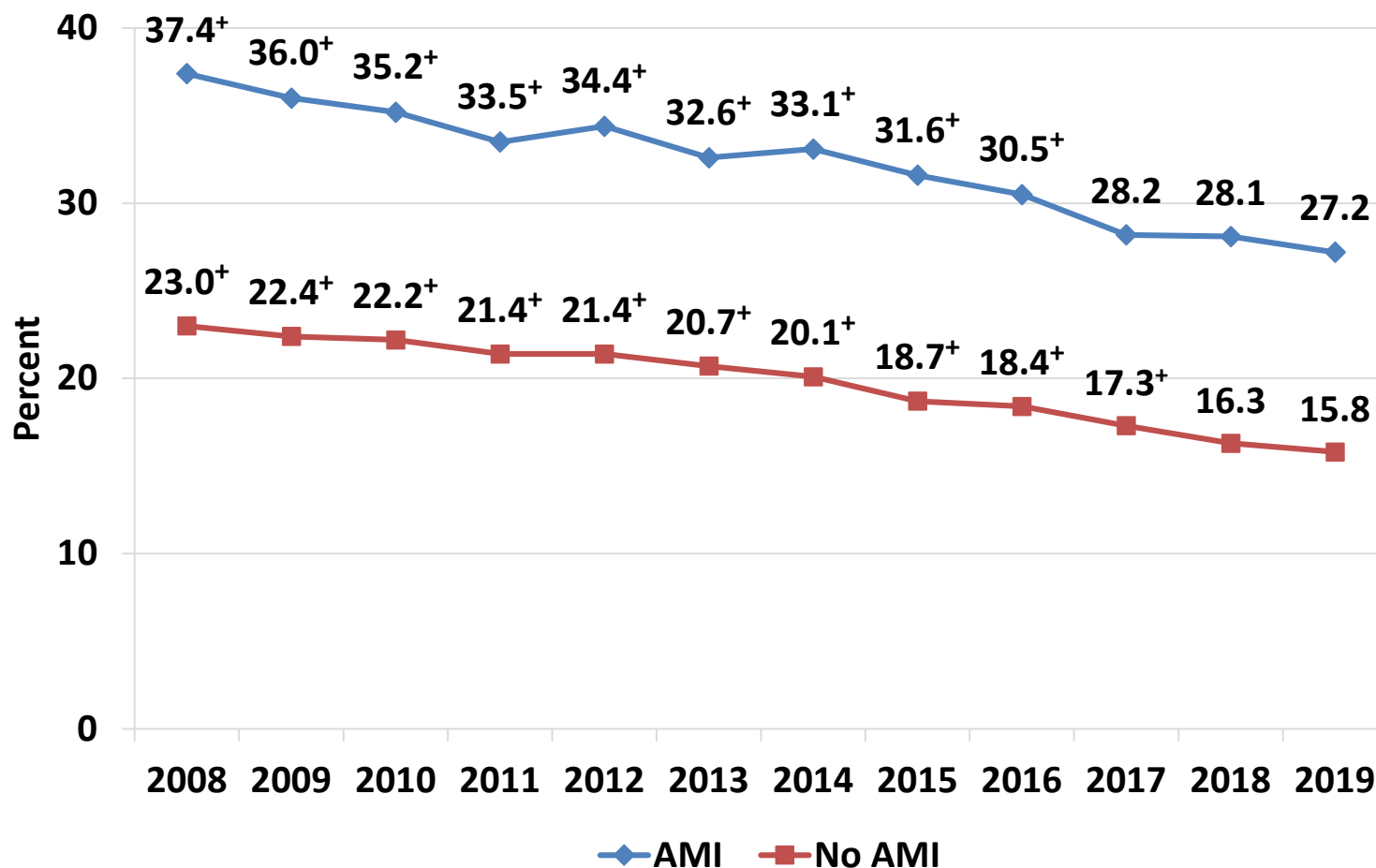


Current Smoking is defined as any cigarette use in the 30 days prior to the interview date.

Behavioral Health Condition includes Any Mental Illness (AMI) and/or Substance Use Disorder (SUD).

⁺ Difference between this estimate and the 2019 estimate is statistically significant at the .05 level.

Current Smoking among Adults (Age ≥ 18) with Past Year Any Mental Illness (AMI): NSDUH, 2008-2019

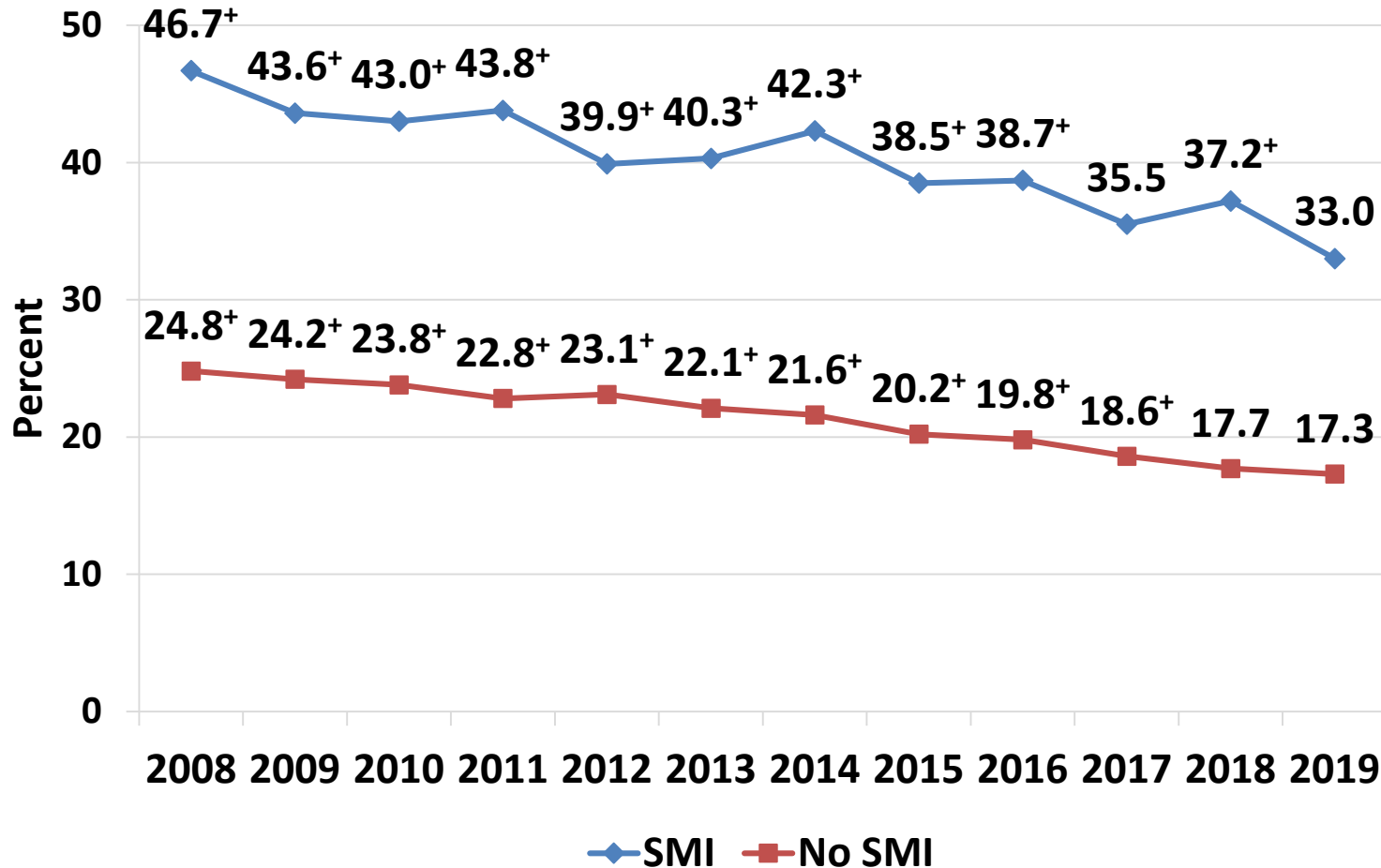


Current Smoking is defined as any cigarette use in the 30 days prior to the interview date.

Any Mental Illness is defined as having a diagnosable mental, behavioral, or emotional disorder, other than a developmental or substance use disorder, based on the 4th edition of the *Diagnostic and Statistical Manual of Mental Disorders (DSM-IV)*.

⁺ Difference between this estimate and the 2019 estimate is statistically significant at the .05 level.

Current Smoking among Adults (Age ≥ 18) with Past Year Serious Mental Illness (SMI): NSDUH, 2008-2019

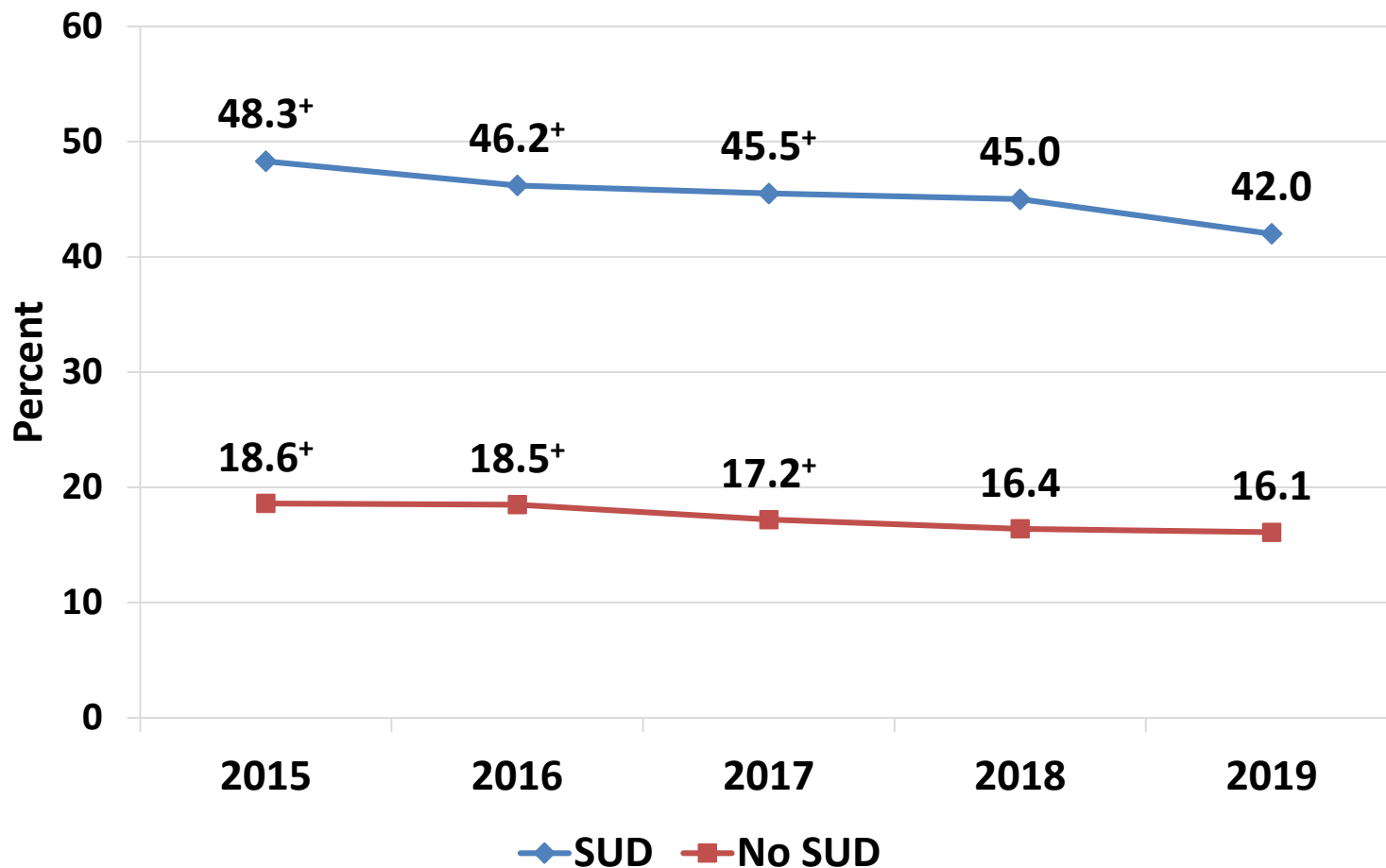


Current Smoking is defined as any cigarette use in the 30 days prior to the interview date.

Serious Mental Illness is defined as having a diagnosable mental, behavioral, or emotional disorder, other than a developmental or substance use disorder resulting in serious functional impairment, based on the 4th edition of the *Diagnostic and Statistical Manual of Mental Disorders (DSM-IV)*.

⁺ Difference between this estimate and the 2019 estimate is statistically significant at the .05 level.

Current Smoking among Adults (Age ≥ 18) with a Past Year Substance Use Disorder (SUD): NSDUH, 2015-2019



Current Smoking is defined as any cigarette use in the 30 days prior to the interview date.

Substance Use Disorder is defined as meeting criteria for illicit drug or alcohol dependence or abuse. Dependence or abuse is based on definitions found in the 4th edition of the *Diagnostic and Statistical Manual of Mental Disorders (DSM-IV)*.

⁺ Difference between this estimate and the 2019 estimate is statistically significant at the .05 level.